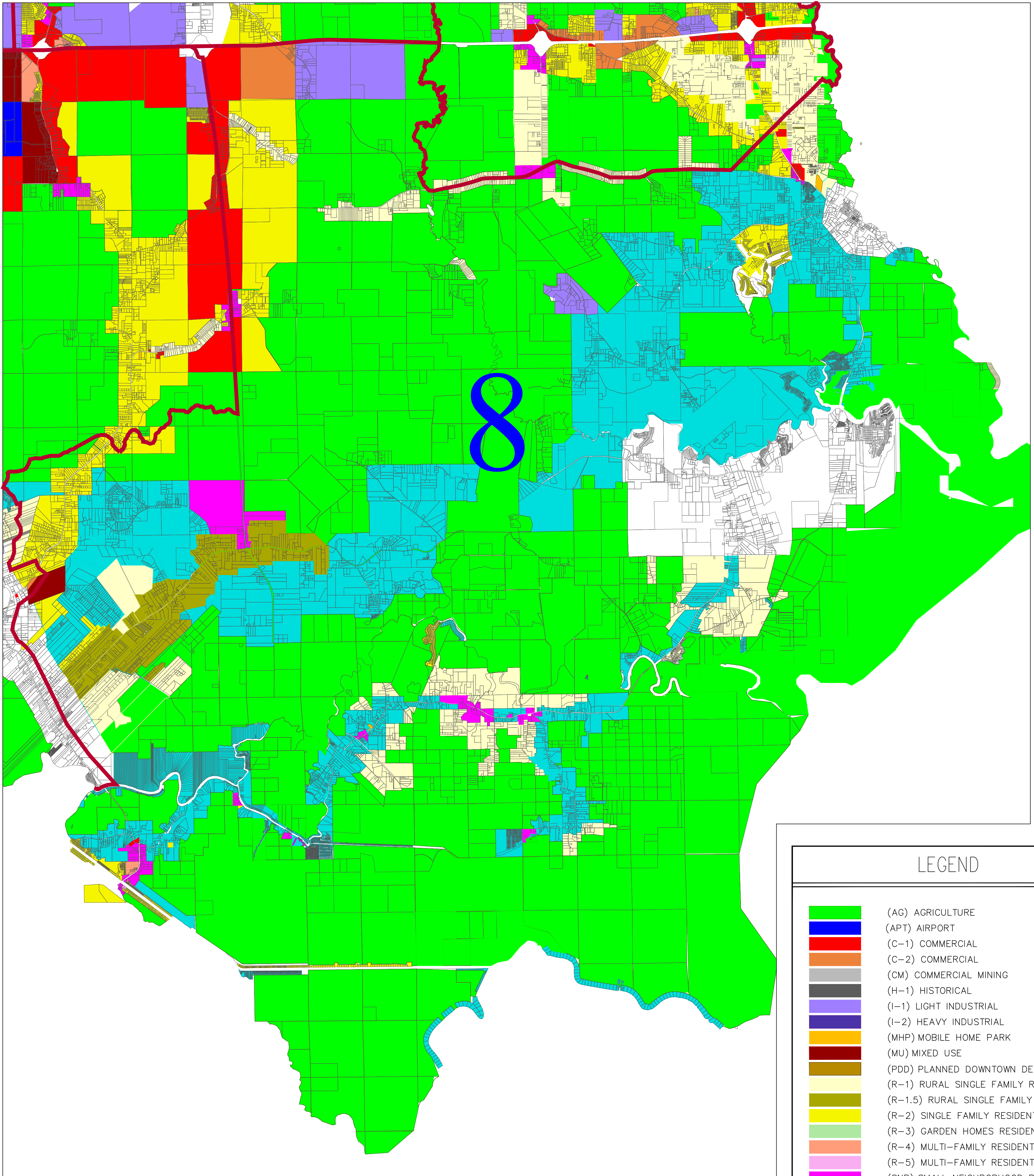
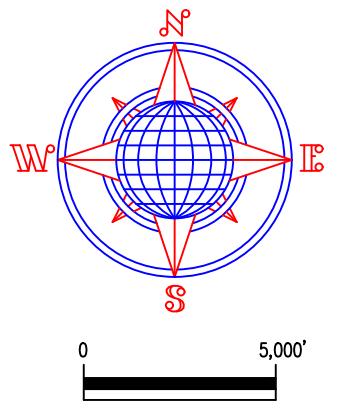


# LIVINGSTON PARISH ZONING MAP



LEGEND	
	(AG) AGRICULTURE
	(APT) AIRPORT
	(C-1) COMMERCIAL
	(C-2) COMMERCIAL
	(CM) COMMERCIAL MINING
	(H-1) HISTORICAL
	(I-1) LIGHT INDUSTRIAL
	(I-2) HEAVY INDUSTRIAL
	(MHP) MOBILE HOME PARK
	(MU) MIXED USE
	(PDD) PLANNED DOWNTOWN DEVELOPMENT
	(R-1) RURAL SINGLE FAMILY RESIDENTIAL
	(R-1.5) RURAL SINGLE FAMILY RESIDENTIAL
	(R-2) SINGLE FAMILY RESIDENTIAL
	(R-3) GARDEN HOMES RESIDENTIAL
	(R-4) MULTI-FAMILY RESIDENTIAL
	(R-5) MULTI-FAMILY RESIDENTIAL
	(SNB) SMALL NEIGHBORHOOD BUSINESS
	(UC) UNCLASSIFIED

**COUNCIL DISTRICT NO. 8**

**PARISH PRESIDENT  
LAYTON RICKS**

This map has been prepared from information obtained from Federal, State, and local sources. Alvin Fairburn & Associates, LLC cannot be responsible for the accuracy of the information obtained from these sources and certain information contained in this map may have changed since such information was compiled. Therefore, no warranties or representations whatsoever, expressed or implied, including warranties of merchantability or fitness, are made by Alvin Fairburn & Associates, LLC with respect to this map. Under no circumstances shall Alvin Fairburn & Associates, LLC be responsible to any party for any costs, expenses, damages or injuries, including special, incidental or consequential damages, to any person or property arising from the use, misuse, sale or reliance on this map. All Alvin Fairburn & Associates, LLC maps are copyrighted and are not to be reproduced in whole or in part.



**ALVIN FAIRBURN & ASSOCIATES, LLC**  
 CONSULTING ENGINEERS ~ ARCHITECTS  
 LAND SURVEYORS ~ DESIGNERS  
 LAND DEVELOPMENT CONSULTANTS  
 1289 DEL ESTE AVENUE  
 DENHAM SPRINGS, LOUISIANA 70726 (225) 665-1515